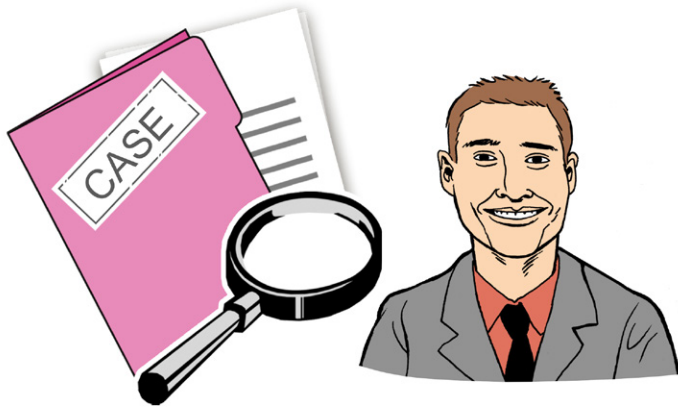


# The people involved in your case

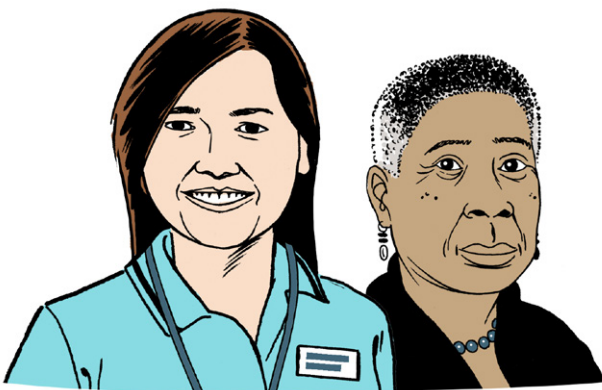
Easy read



The **Investigator** looks after your case.



The **Public Support Officer** can meet you to support you through your case.



The **Case Examiners** look at the evidence collected by the investigator and decide if the case needs a hearing or meeting.



The **Panel Members** make a decision at a hearing or meeting.



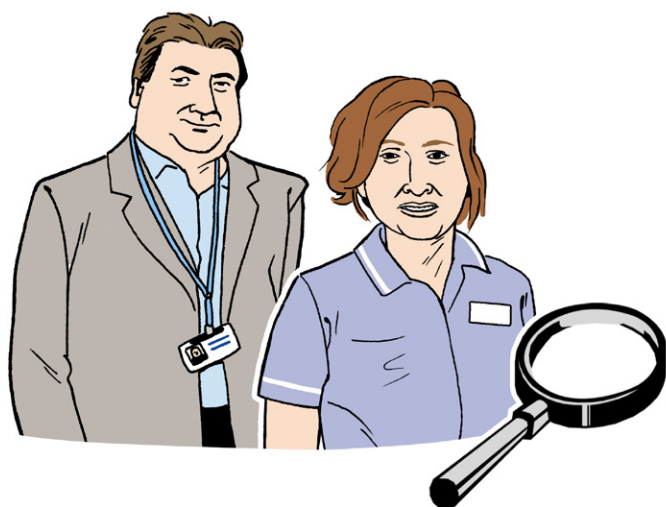
The **Hearings Coordinator** writes up the decision at the hearing or meeting.



The **Legal Assessor** is an independent lawyer that gives the panel advice on the law.



The **Case Presenter** is a lawyer and presents the case (complaint) in the hearing or meeting.



The **Registrant**, is the nurse, midwife or nursing associate being investigated, and their **Representative** represents them.

[www.nmc.org.uk](http://www.nmc.org.uk)

**NMC** Nursing &  
Midwifery  
Council



Illustration ©CHANGE [www.changepeople.org](http://www.changepeople.org)